



# Technologies for Short Term Power Trading



Ozan Korkmaz  
March 2025



# smartPulse

## General



Team  
of 75



Office  
London,  
Istanbul



## Customer



Plants served  
>600  
>20GW

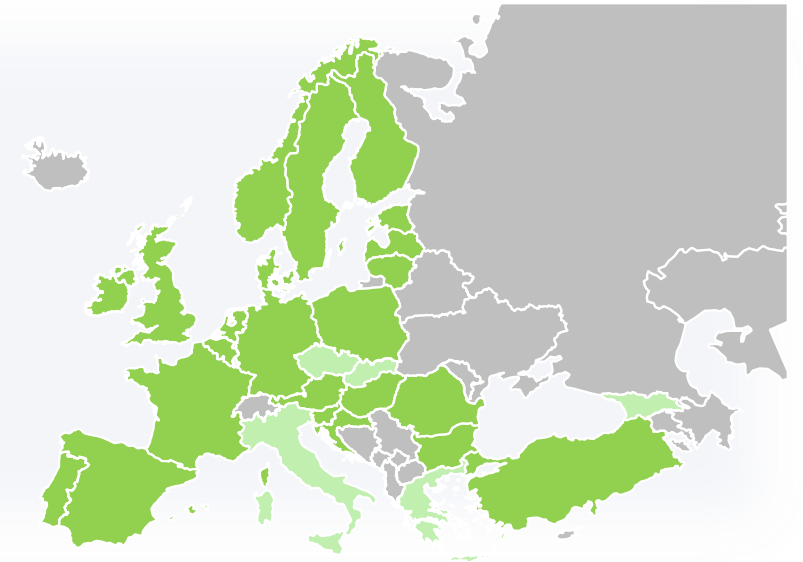


Automated  
Trade  
>20TWh/year

## Uniform Trading Experience Across All Markets

- EPEX
- Nord Pool
- OMIE
- EPIAŞ
- HUPX
- BRM
- IBEX
- CROPEX
- GME (Soon)
- Henex (Soon)

A fully cloud-native solution that integrates all short-term power trading functions into a single platform and committed to delivering the same platform across geographies.



# smartPulse Portal main capabilities

## One Platform for All Functions

**1**

### **Forecast Gateway**

Connected to all known wind/solar forecast providers and provides 1 interface for managing all forecast and observation data

**2**

### **Monitoring**

Via SCADA integration or smartMeter integration smartPulse provides an IoT solution for energy assets

**3**

### **TSO Markets & Scheduling**

Automatic bidding to TSO markets and Scheduling for TSOs (expanding regional coverage)

**4**

### **Trading Automation**

Day-ahead and IDA bidding automation, advanced algorithmic trading for intraday

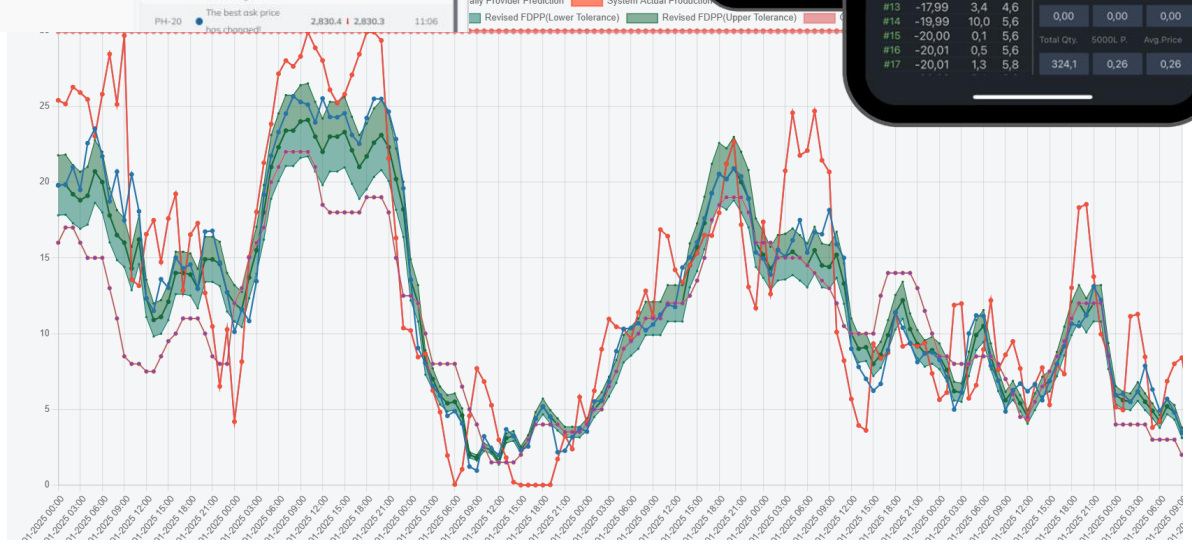
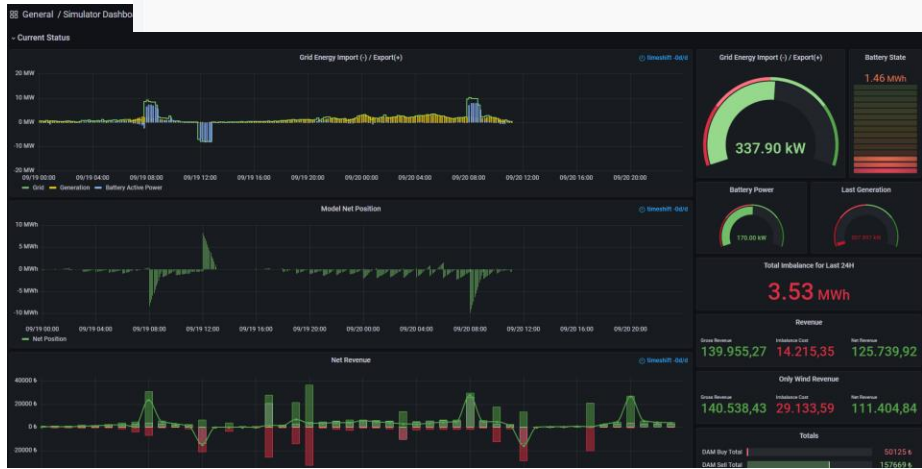
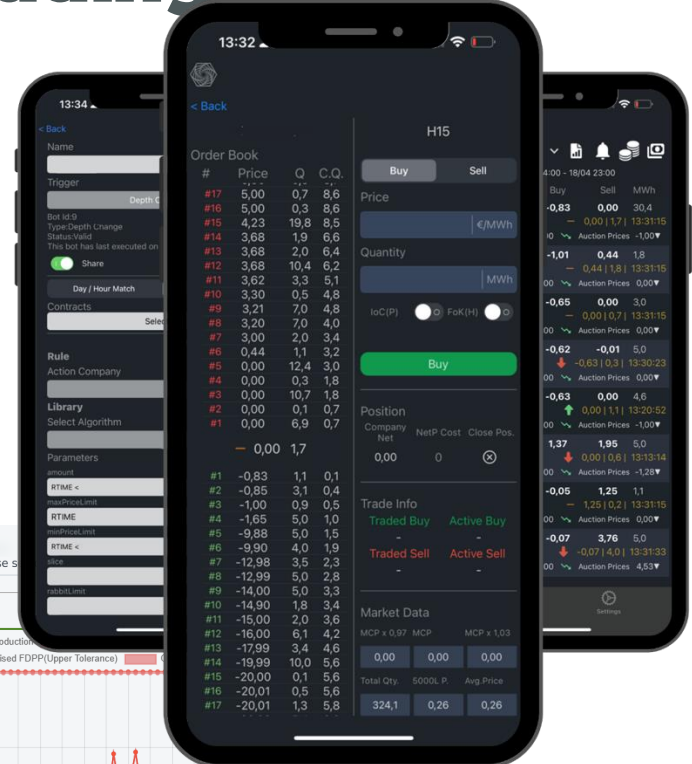
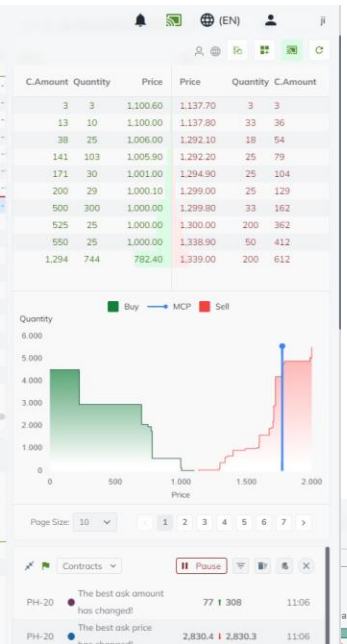
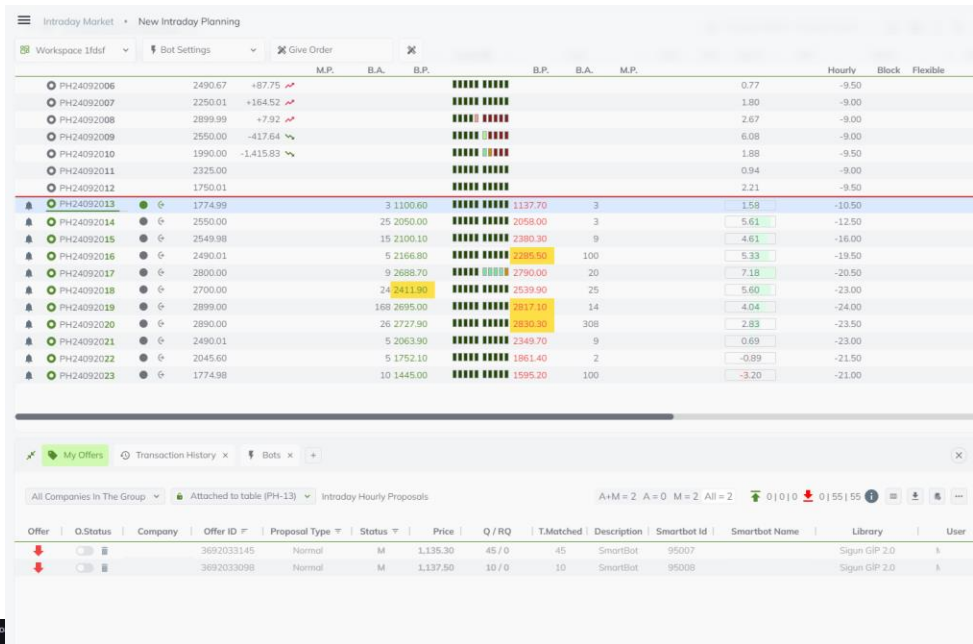
**5**

### **Optimise & Control**

Commercial Portfolio Optimisation for Short Term for Renewable & Battery portfolios + Controlling of Battery operations acting as a central 'EMS' solution (expanding regional coverage)



# smartPulse The SuperPlatform of Power Trading

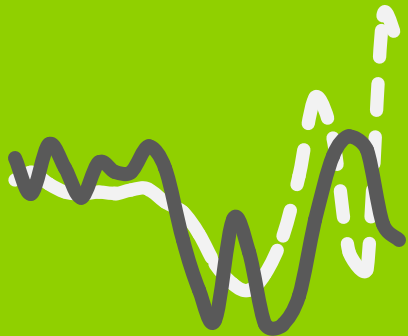




# smartPulse : all short-term trading use cases addressed

## Position Closing

Robots tracking and managing net position, generation/retail forecasts and market prices.



## Flex Asset Trading

Based on technical constraints of physical asset automatically chase opportunities



## Prop Trading

Arbitrage between

DAM – Cont. Intraday  
Intraday Auc. Cont. Intraday  
Cont. Intraday – Cont. Intraday



# Real-time End to End Battery Management Suite

SmartPulse's end to end battery management suit seamlessly orchestrates the optimization engine, algorithmic trading robots and ems integration for automatically capitalizing trading opportunities in short-term energy markets.

## Optimization Engine

- In house developed optimization model
- Flexibility to adapt to market dynamics and client needs
- Capability to integrate with algorithmic trading bots
- Highly skilled analytics team for model management

## Algorithmic Trading Robots

- Sophisticated algorithms tailored to each market's needs
- No one-size fits-all approach- customizable to client requirements
- Capability to operate multiple trading strategies simultaneously
- Embedded safety measures and risk controls

## Remote Control for EMS

- Capability to integrate EMS providers through multiple protocols
- Ability to send signals and control battery output
- Real-time data retrieval and processing
- Feeding real-time data into optimization models.

# Volume of Hourly Contracts in IDM since 01-07-2024

